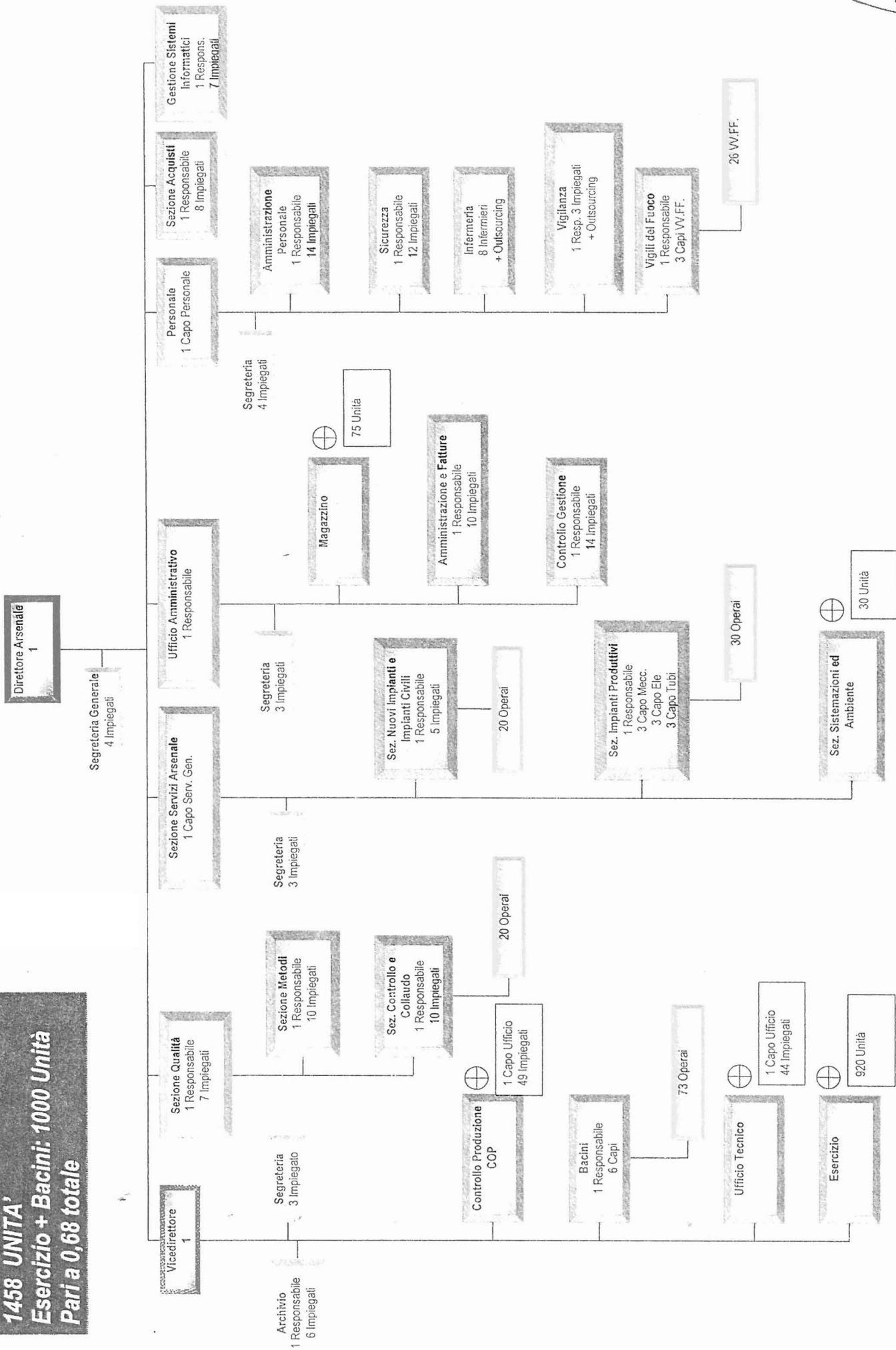


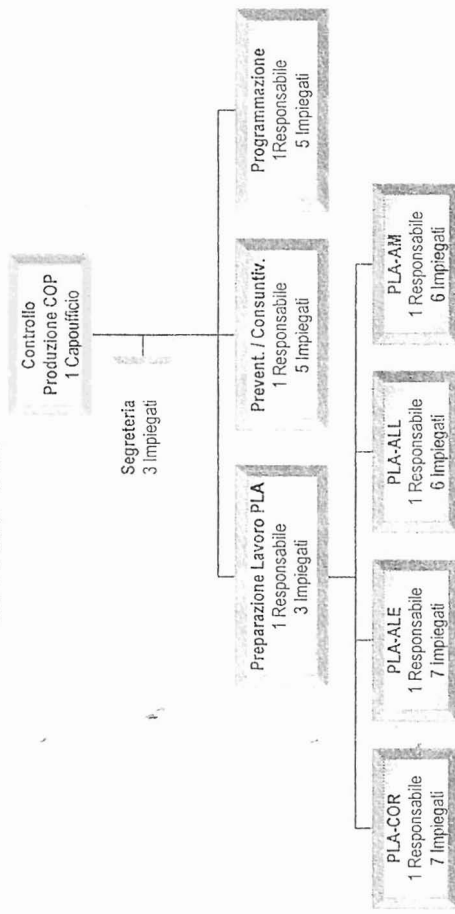
NAVIGLIO / TONNELLAGGIO COMPLESSIVO

ORGANIGRAMMA ARSENALE DI TARANTO

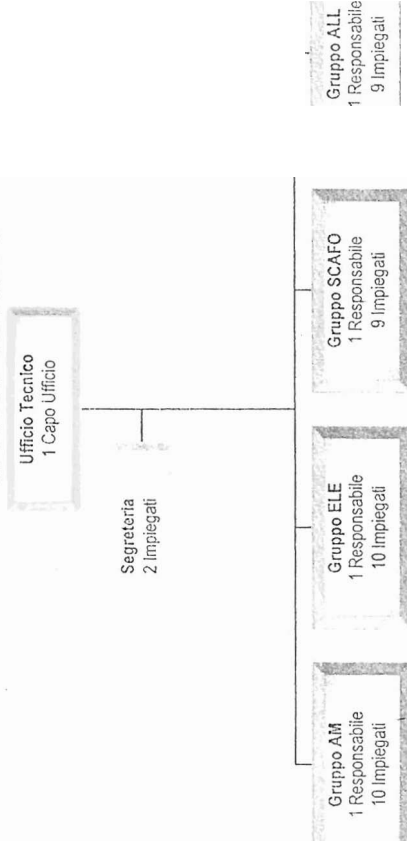
1458 UNITA'
Esercizio + Bacini: 1000 Unità
Pari a 0,68 totale



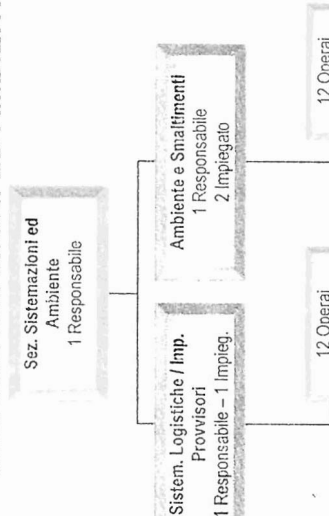
UFFICIO COP



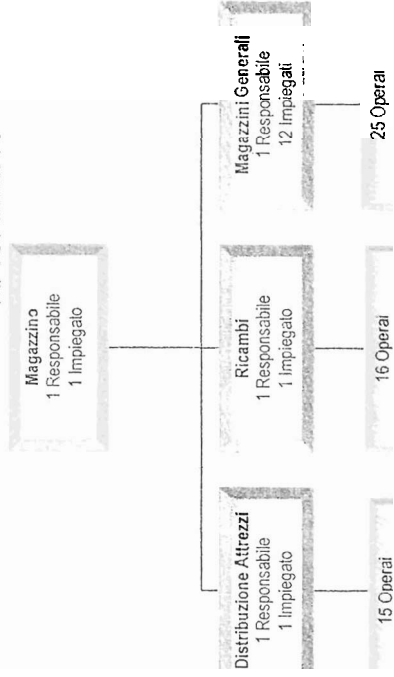
UFFICIO TECNICO



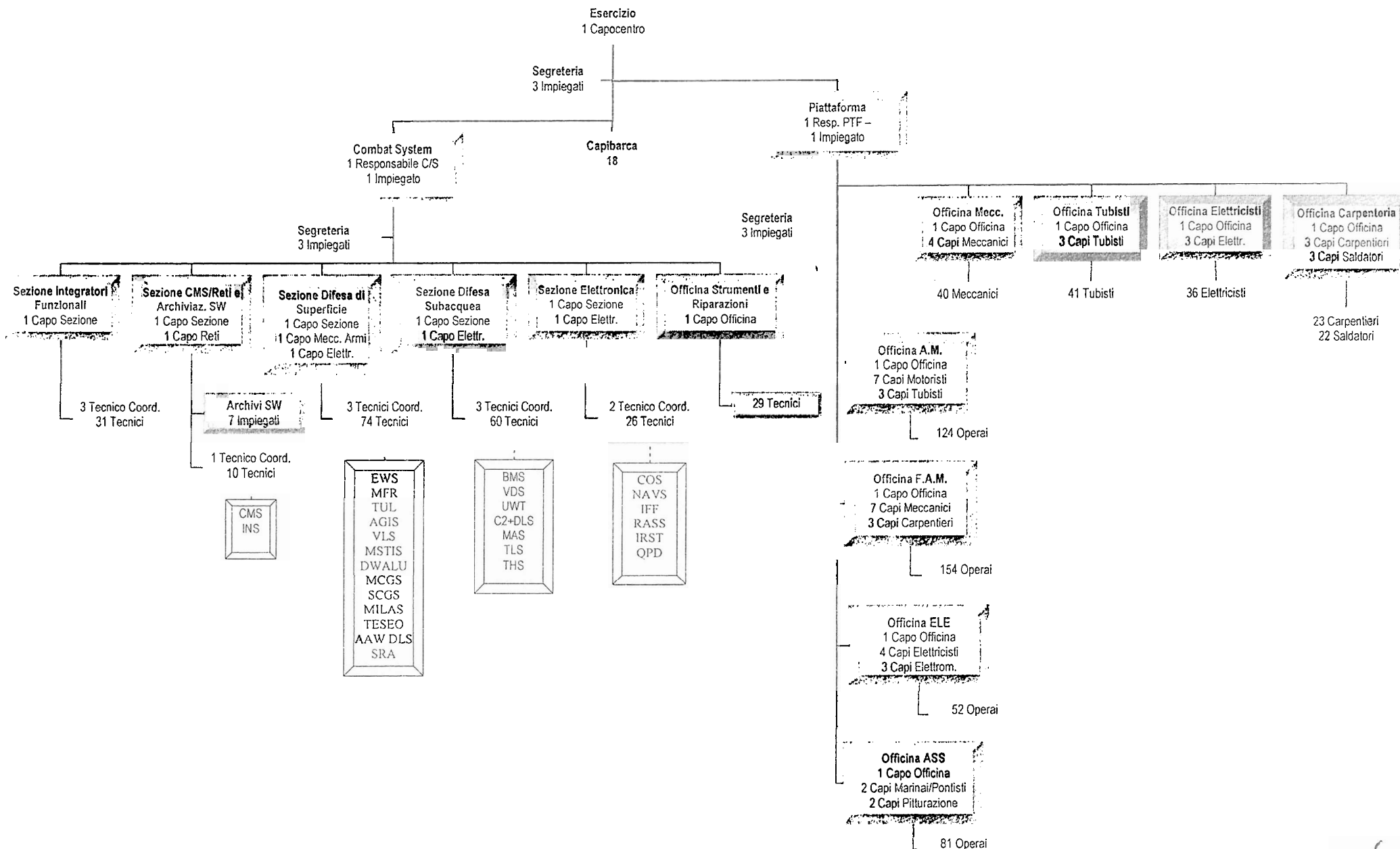
SEZ. SISTEMAZIONI ED AMBIENTE



MAGAZZINO



SEZIONE ESERCIZIO



RANTO organigr_FINALE
CRONIMI

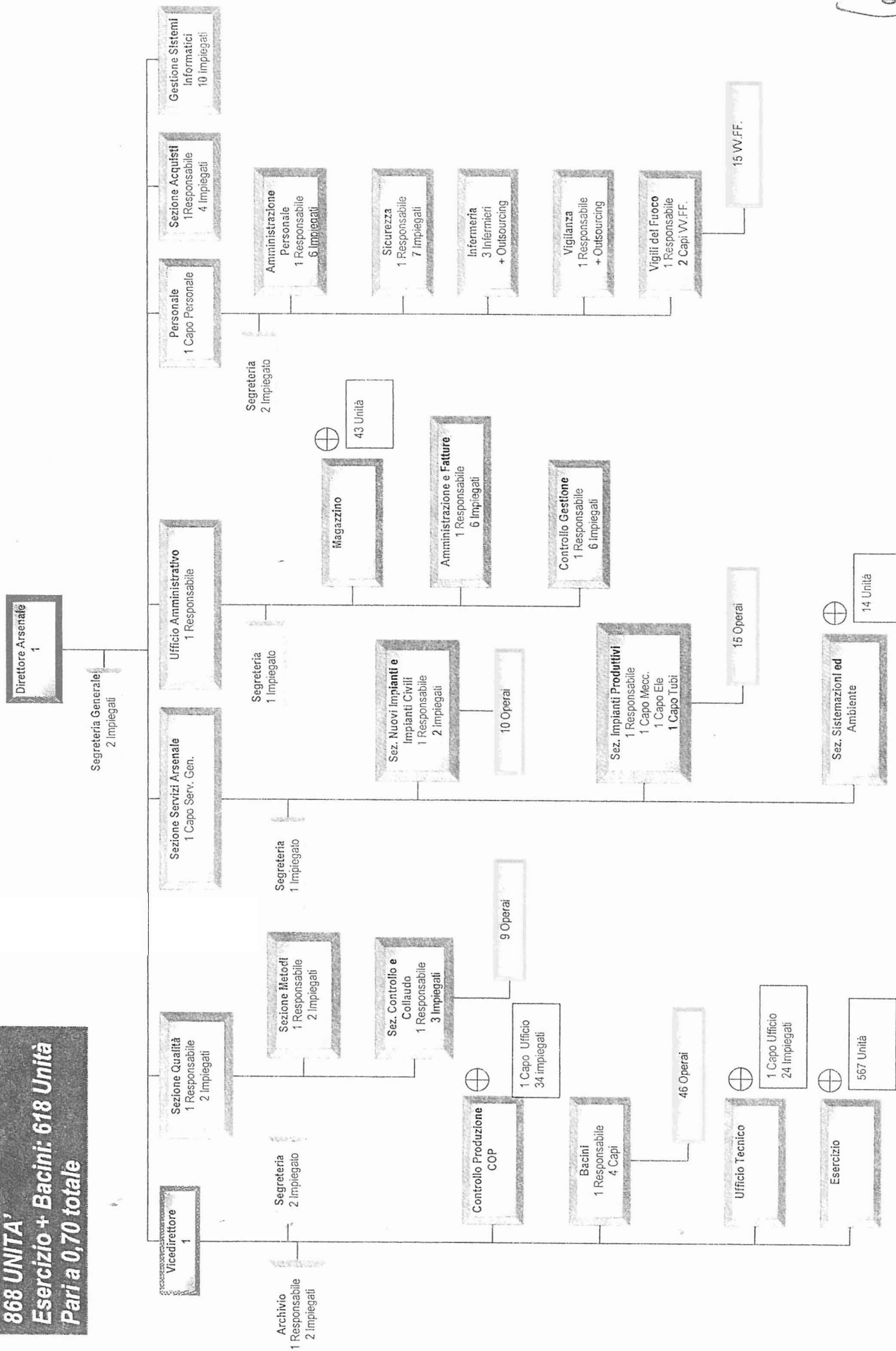
ALE	Allestimento Elettrico
ALL	Allestimento
AM	Apparato Motore
ASS	Assistenza
COR	Coordinamento
ELE	Elettrico
FAM	Fuori Apparato Motore
PLA	Programmazione Lavori

ORGANIGRAMMA ARSENALE DI LA SPEZIA

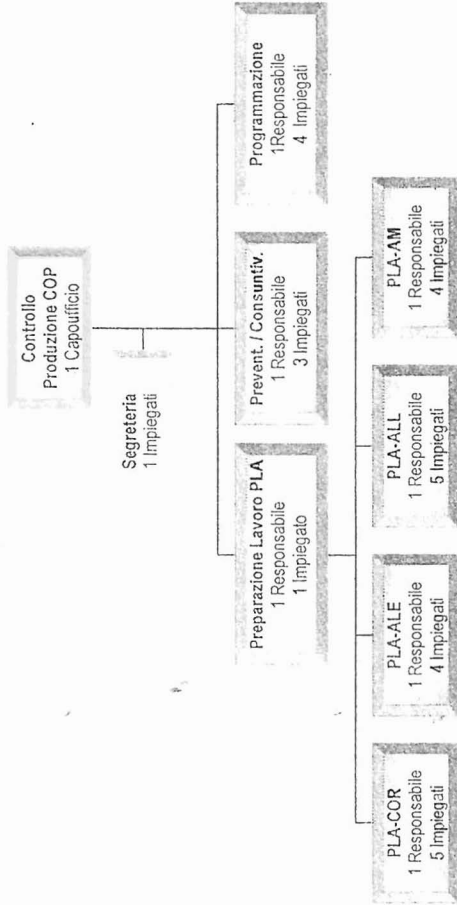
868 UNITA'

Esercizio + Bacini: 618 Unità

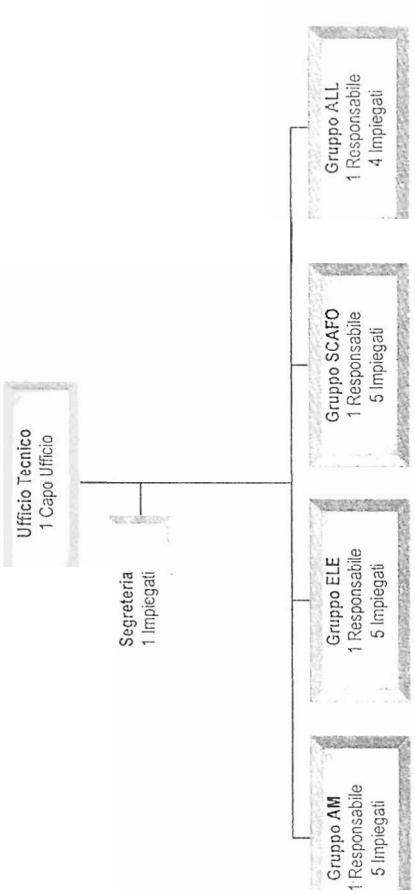
Pari a 0,70 totale



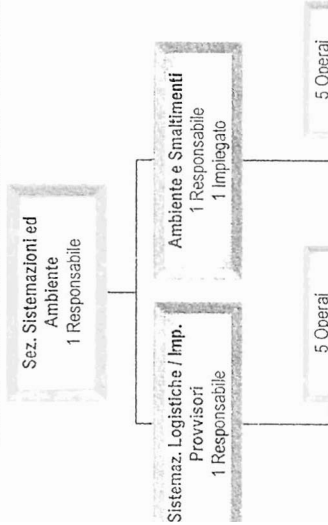
UFFICIO COP



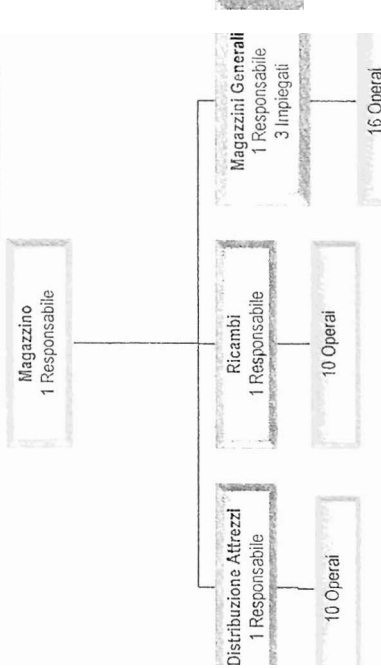
UFFICIO TECNICO



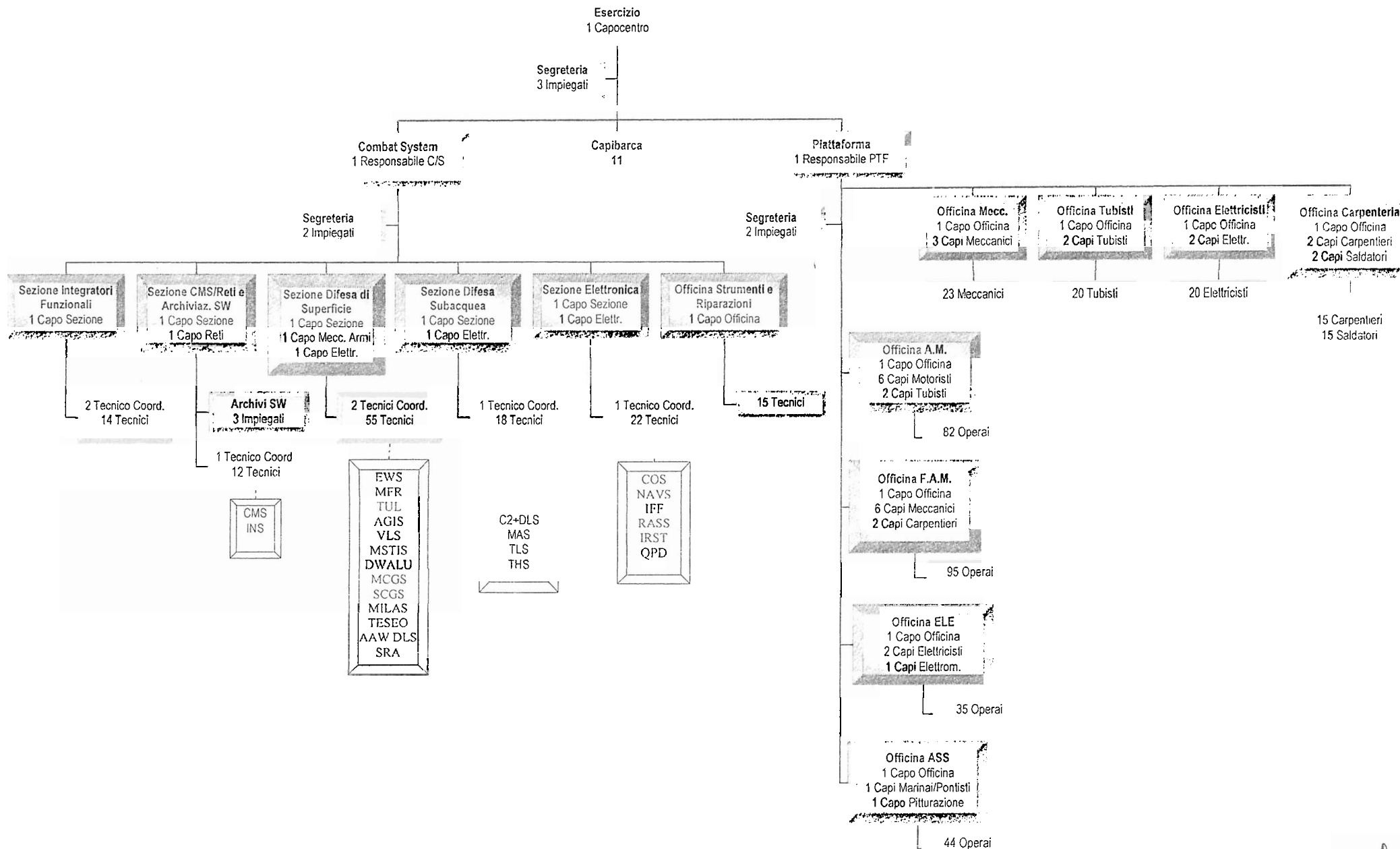
SEZ. SISTEMAZIONI ED AMBIENTE



MAGAZZINO



SEZIONE ESERCIZIO

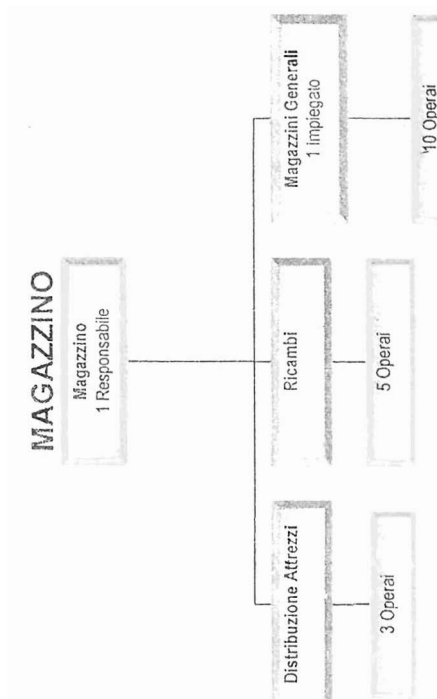


CRONIMI

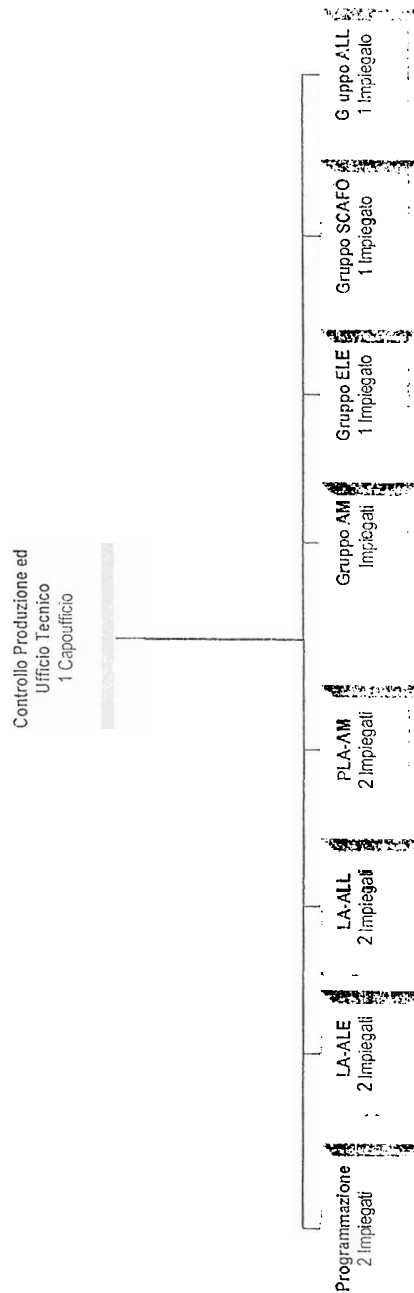
ALE	Allestimento Elettrico
ALL	Allestimento
AM	Apparato Motore
ASS	Assistenza
COR	Coordinamento
ELE	Elettrico
FAM	Fuori Apparato Motore
PLA	Programmazione Lavori

1

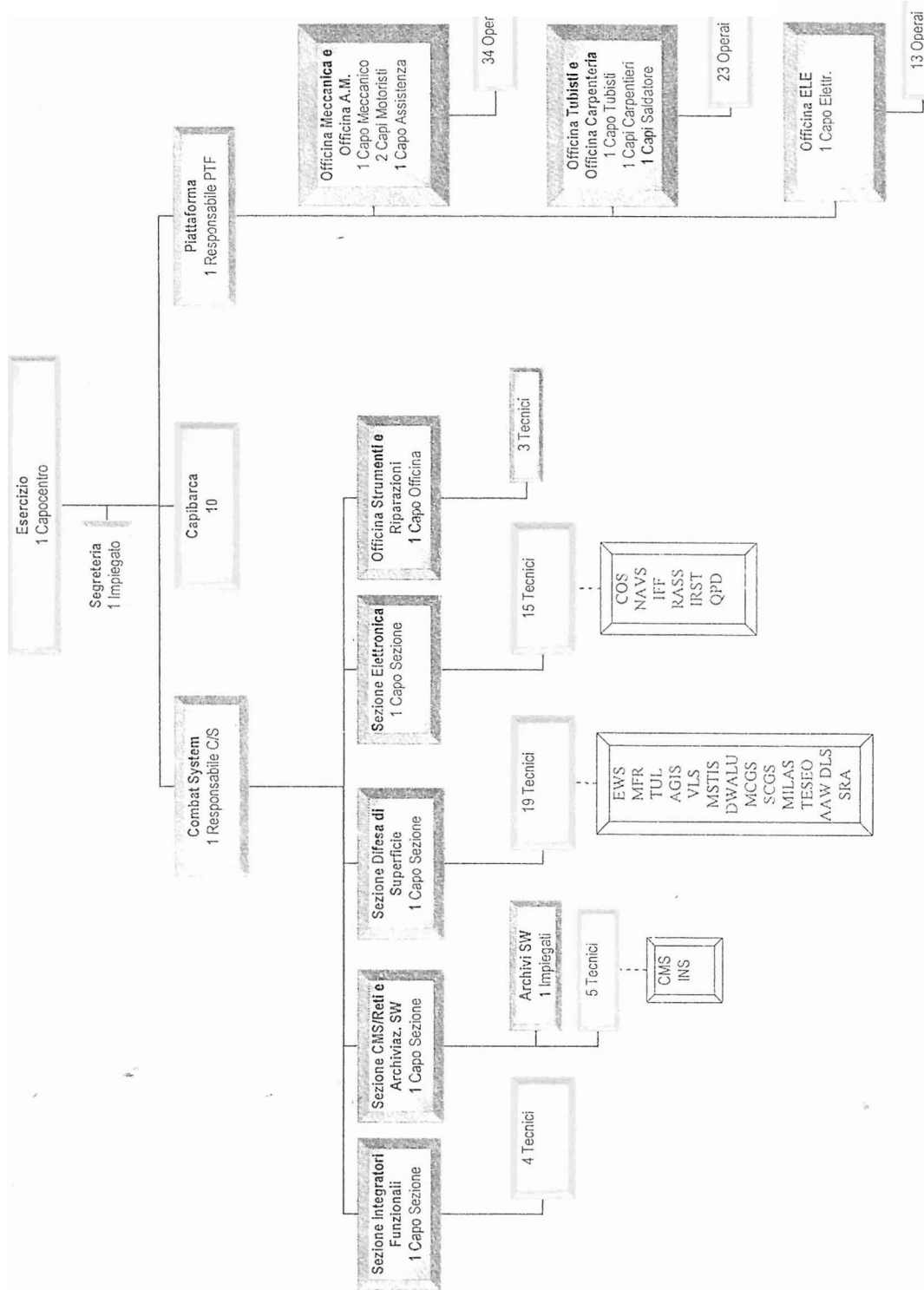




CONTROLLO PRODUZIONE ED UFFICIO TECNICO



SEZIONE ESERCIZIO



Capo Officina
1 Capi
Elettricisti
0 Capi
Elettrici

GUSTA organigr_finale
CRONIMI

ALE	Allestimento Elettrico
ALL	Allestimento
AM	Apparato Motore
ASS	Assistenza
COR	Coordinamento
ELE	Elettrico
FAM	Fuori Apparato Motore
PLA	Programmazione Lavori